



IIDA國際室內設計協會學生設計競賽

IFLA Student Design Competition



競賽介紹



IIDA國際室內設計協會學生設計競賽
IFLA Student Design Competition

競賽說明

國際室內設計協會（IIDA）是全球範圍內的商業室內設計協會。通過遍布58個國家的15,000多名會員的網絡為設計專業人士、行業分支機構、教育工作者、學生、公司及其客戶提供支持。我們主張在教育、卓越設計、立法、領導力、認證和社區推廣等方面取得進步，以提高室內設計的價值和理解，這是一個專業，可以提高商業價值，並且每天都會對人們的健康和福祉產生積極的影響。



競賽介紹



IIDA國際室內設計協會學生設計競賽
IFLA Student Design Competition

參賽資格

向向世界各地的室內設計或建築項目研究生和大學生開放。

- * 可個別報名或團隊報名（至多五人）。
- * 僅接受電子檔作品。

評審標準

1. 創新與創造力 20%
2. 一致性和功能性 20%
3. 人類和環境影響 20%
4. 完成計劃要求程度和額外超出基本計劃的程度 20%
5. 簡報能力20%

* 參賽作品的評判標準包括美學、設計、創造力和功能的卓越性，以及設計解決方案對項目挑戰的適用性以及設計元素的成功整合。



競賽介紹



IIDA國際室內設計協會學生設計競賽
IFLA Student Design Competition

參賽時程

報名時間：2024年01月09日至02月20日23:59 (北美中部時區)

獲獎結果公佈：2024年春天

參賽費用

個人參加：

IIDA學生會員35美金 / 非學生會員60美金

團隊參加：

IIDA學生會員50美金 / 非學生會員90美金

官方網站

<https://iida.org/submissions/2024-iida-student-design-competition>



競賽介紹



IIDA國際室內設計協會學生設計競賽
IFLA Student Design Competition

競賽主題

2024設計問題：

馬里蘭州巴爾的摩新建的兒科初級保健診所將於2024年秋季竣工。這家診所將提供從出生到18歲的全面兒科初級照護，並提供住院治療健康行為問題。診所的設計範圍將包括檢查室、公共區域、行政辦公室和醫生診間、經理辦公室、護士站、員工休息室、醫務室、雜物間、親子廁所和員工廁所、患者教育空間和室外區域。



2022 得獎作品



IIDA國際室內設計協會學生設計競賽
IFLA Student Design Competition

First Place



Suar Behavioral Health Clinic
Arfan Ikhsanul, Amal Hanami Martani, Arya Putra | Bandung Institute of Technology



2022 得獎作品

Second Place



IIDA國際室內設計協會學生設計競賽
IFLA Student Design Competition



The large therapy design features antiligature furniture and lighting as well as bariatric friendly furniture. The informal, residential style layout reinforces the "we" approach. This substance abuse large therapy room is more mature in design to accommodate for pre-teens and teens. Lastly, the cordless shading devices are antiligature.



Willow Pediatrics Cleveland Behavioral Health
Marygrace Lee and Molly Taylor, Student IIDA | Mississippi State University



2022 得獎作品



IIDA國際室內設計協會學生設計競賽 IFLA Student Design Competition

Third Place

- Reduce light exposure
- Reduce depression and increase vegetation
- Help control circadian rhythms
- Increase productivity
- Visual distraction
- Distraction caused due to glare perception
- glare
- Control glare and decrease radiation heat
- Reduce aggression and confusion
- Increase sense of control
- Increase familiarity
- Increase design calming and therapeutic effects
- Reduce performance anxiety
- Increase work satisfaction
- Optimize layout design which affects performance
- Layout
- Accommodate workflow process to minimize steps necessary to receive services
- Increase productivity for all ages
- Safety features
- Reduce employee injuries in face of hostile visitors and repetitive movement
- Waiting Areas
- Reduce stress and improve satisfaction
- Improve user perception of care quality and health outcomes
- Users in the waiting area should not see therapist waiting area to have separation between staff and patient areas
- Increase staff and patient privacy
- Increase sense of power
- Increase sense of power

MAIN DESIGN FEATURES



COMMUNICATION BIOPHILIC DESIGN MARKETING

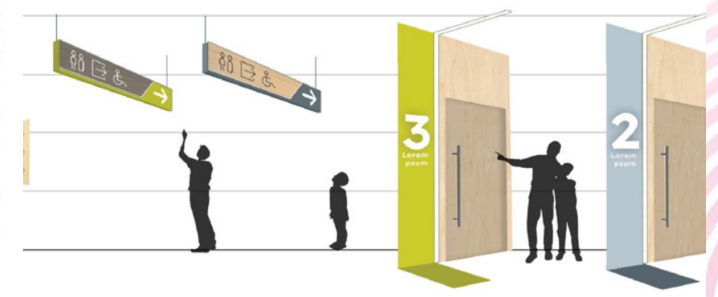
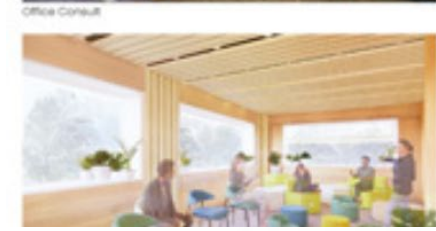
SUSTAINABILITY



All furniture and materials selected for this project comply with the above green standards to minimize impacts on the environment



The layout is planned based on the design requirements of all spaces. Public area is integrated into two different functional health specialties, each needs a range of therapy rooms and consult rooms.



Hanging Banners Therapy Room Entrances

Embark
Matthew Canabarro, Nayeon Kwon, Heley Yang, and Nina Yang | Cornell University